

FIVC Butterfly Valve

Ductile Iron – PN 16 – Lugged – Hand lever – Replaceable – w/Pin – WRAS – EN 1092-2



LUG series

Technical data

Main features and materials

- Body: Ductile Iron
 - Disc: Stainless Steel
 - Pin: Stainless Steel
 - Stem: Stainless Steel
 - Seat: Replaceable EPDM
 - Operation: 15° Notch hand lever in Malleable Iron
 - Coating: Epoxy
 - USP: Maintenance and installation efficient
- WRAS approval
- Standard: BS EN 593
 - Dimensions: BS EN 1092-2
 - Type:
 - Drilling: PN 16
 - Shaft: SS AISI 410
 - Thread: Metric

Field of applications

- Temperature range: -15 to 85 °C
 - Max. working pressure: 16 bar
- Water treatment plants and Water distribution
 - HVAC (Heat Ventilation Air Conditioning)
 - Fire fighting
 - General services
 - Irrigation
 - Shipbuilding
 - Powdery products

Description

FIVC Lugged Butterfly Valve with its replaceable seat is designed to be installed in pipelines for isolating or regulating purposes. With its high quality rotational disc, the valve features quick shut-off function.

Since the valve is pinless, the component is easy to be changed and be maintained at a low cost. Besides, its pinless construction leads to good corrosion resistance. Furthermore, the valve can be closed and opened precisely because of the non-gap between the shaft and disc.

The valve can be used for water.

Declaration

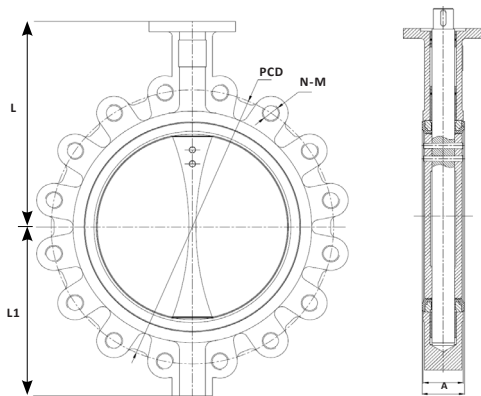
The product has been inspected and tested in accordance with the European PED Directive N° 2014/68/EU, dated 15/05/2014.



Alternative Product Versions

Disc	Standard	Seat	Operation
<ul style="list-style-type: none"> • Ductile Iron 	<ul style="list-style-type: none"> • BS 5155 • ISO 5752 • MSS SP-67 • API 609 	<ul style="list-style-type: none"> • Vulcanized • Other seats upon request 	<ul style="list-style-type: none"> • Gearbox • Other operations upon request
Threading	Drilling	PN	Size
<ul style="list-style-type: none"> • UNC • Whitworth 	<ul style="list-style-type: none"> • PN 20 • PN 25 • ANSI 150 	<ul style="list-style-type: none"> • PN 10 • PN 25 	<ul style="list-style-type: none"> • DN 50+

Dimensions



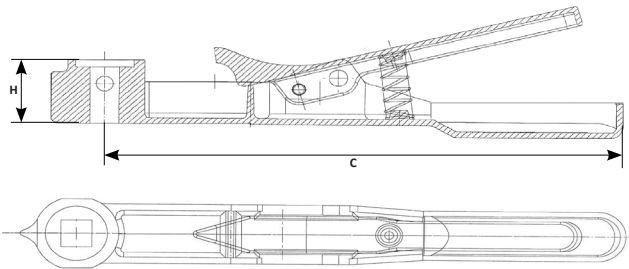
Product code	Size (DN)	L*	L1*	A*	B*	N-M	H	C
LUGN50065MNEPR1683	65	150.4	76	44.5	49.1	4-M16	27	195/266
LUGN50080MNEPR1683	80	156.4	98.6	44.5	49.1	8-M16	27	195/266
LUGN50100MNEPR1683	100	167.9	118.7	51	55.5	8-M16	27	266
LUGN50125MNEPR1683	125	186.5	129.4	54.5	58.8	8-M16	27	266
LUGN50150MNEPR1683	150	205.7	142	54.5	59.1	8-M20	27	328
LUGN50200MNEPR1683	200	230.6	176	59.6	64.1	12-M20	30	386

*Dimensions are in millimeters

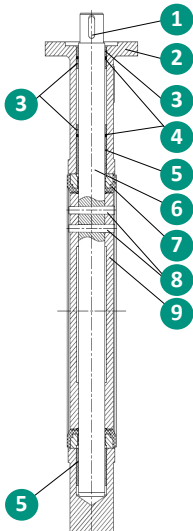
FIVC Butterfly Valve

Ductile Iron – PN 16 – Lugged – Hand lever – Replaceable – w/Pin – WRAS – EN 1092-2

Dimensions



Product Specification



N°	Name	Material
1	Body	Ductile Iron A536 Gr. 65-45-12
2	Disc	Stainless Steel A351 CF8M
3	Shaft	Stainless Steel A276 SS 410
4	Seat	EPDM
5	O-Ring	EPDM
6	Bushing	Bronze B62 C83600
7	Pin	Stainless Steel BS970 316S11