

# FIVC Butterfly Valve

Ductile Iron – PN 16 – Wafer – Gearbox – Vulcanized – w/Pin – EN 1092-2



WAF series

## Technical data

### Main features and materials

- Body: Ductile Iron
- Disc: Stainless Steel
- Pin: Stainless Steel
- Stem: Stainless Steel
- Seat: Vulcanized EPDM
- Operation: Gearbox in Ductile Iron
- Coating: RAL 5015 (*thickness 250 micron*)
- USP: Maintenance and installation efficient
- Standard: BS EN 593
- Dimensions: Face-to-Face acc. to BS EN 558 (*series 20*)
- Type:
  - Drilling: PN 16
  - Shaft: SS AISI 431
  - Thread: Wafer
- Testing:
  - BS EN 12266-1
  - Shell pressure: 2.40 MPa
  - Sealing pressure: 1.76 MPa

### Field of applications

- Temperature range: -20 to 120 °C
- Max. working pressure: 16 bar

- Petrochemical industry
- Irrigation systems
- Compressed air
- industries
- Textile industry
- Mechanical industry

## Description

FIVC Wafer Butterfly Valve with its vulcanized seat is designed to be installed in pipelines for isolating or regulating purposes. With its high quality rotational disc, the valve features quick shut-off function.

Due to the integrated pin in the disc, the butterfly valve features much higher strength and can work in higher pressure conditions. Furthermore, the valve can by the high-quality gearbox be closed and opened precisely because of the non-gap between the shaft and disc.

## Declaration

The product has been inspected and tested in accordance with the European PED Directive N° 2014/68/EU, dated 15/05/2014 and is CE marked.

## Alternative Product Versions

Disc	Construction	Seat	Operation
<ul style="list-style-type: none"> <li>• Alu-Bronze</li> <li>• Ductile Iron</li> </ul>	<ul style="list-style-type: none"> <li>• Pinless</li> </ul>	<ul style="list-style-type: none"> <li>• Replaceable</li> <li>• Other seats upon request</li> </ul>	<ul style="list-style-type: none"> <li>• 15° Notch hand lever</li> <li>• Other operations upon request</li> </ul>
Threading	Drilling	PN	Size
<ul style="list-style-type: none"> <li>• UNC</li> <li>• Whitworth</li> </ul>	<ul style="list-style-type: none"> <li>• PN 20</li> <li>• PN 25</li> <li>• ANSI 150</li> </ul>	<ul style="list-style-type: none"> <li>• PN 20</li> <li>• PN 25</li> </ul>	<ul style="list-style-type: none"> <li>• DN 40+</li> </ul>

## Product Information

Product code	Size	H	H1	H3	L	ØD2	N-M	a° b°	E	C	F	V	Kg	OTV (N.m)	BTV (N.m)	Gearbox		
																OT N-M	Ratio	N° of turns
WAFN50065MDVEPV1620	65	140	94	-	46	145	4-Ø19	45.0	65		154	135	8.0	17.2	86	200	24:1	6.0
WAFN0080MDVEPV1620	80	145	105	-	46	160	4-Ø19	22.5	65		154	135	8.5	23.1	86	200	24:1	6.0
WAFN50100MDVEPV1620	100	160	126	-	52	180	4-Ø19	22.5	65		154	135	9.5	39.8	169	200	24:1	6.0
WAFN50125MDVEPV1620	125	170	140	-	56	210	4-Ø19	22.5	65		154	135	12.5	61.9	291	200	24:1	6.0
WAFN50150MDVEPV1620	150	190	151	-	56	240	4-Ø23	22.5	65		154	135	14.0	102	291	200	24:1	6.0
WAFN50200MDVEPV1620	200	220	183	-	60	295	4-Ø23	15.0	77		225	285	22.0	192	465	500	30:1	7.5
WAFN50250MDVEPV1620	250	260	217	-	68	355	4-Ø28	15.0	77		225	285	33.0	323	993	500	30:1	7.5
WAFN50300MDVEPV1620	300	290	252	-	78	410	4-Ø28	15.0	80		215	285	47.0	490	1360	1200	50:1	12.5
WAFN50350MDVEPV1620	350	320	285	-	78	470	4-Ø28	11.25	80		215	285	57.0	625	1360	1200	50:1	12.5
WAFN50400MDVEPV1620	400	356	315	271	102	525	4-Ø31	11.25	120	56	124	385	90.0	846	2356	1800	80:1	20.0
WAFN50450MDVEPV1620	450	387	384	271	114	585	4-Ø31	9.0	120	56	124	385	118.0	1131	3394	1800	80:1	20.0
WAFN50500MDVEPV1620	500	424	390	271	127	650	4-Ø34	9.0		121	256	285	160.0	1431	4120	2500	560:1	140
WAFN50600MDVEPV1620	600	524	455	330	154	770	4-Ø37	9.0		130	285	385	250.0	2301	6781	4000	640:1	160

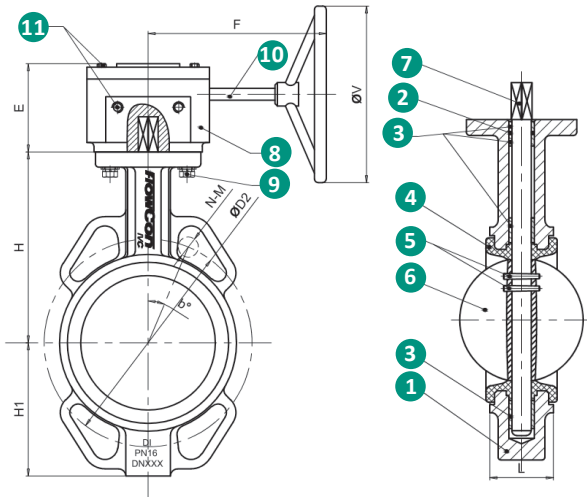
Dimensions are in millimeters • OTV: Operation Torque Value • BTV: Breaking Torque Value

# FIVC Butterfly Valve

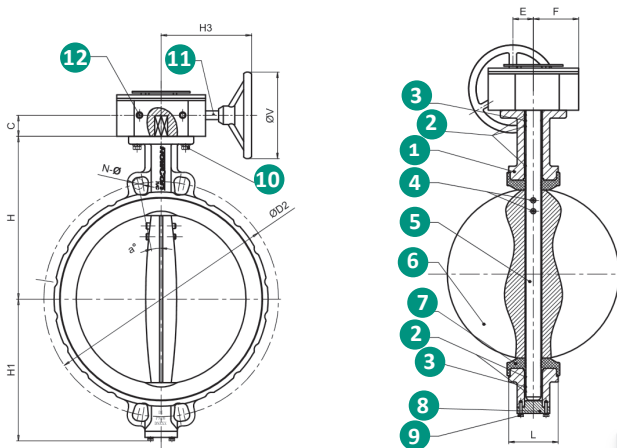
Ductile Iron – PN 16 – Wafer – Gearbox – Vulcanized – w/Pin – EN 1092-2

## Dimensions

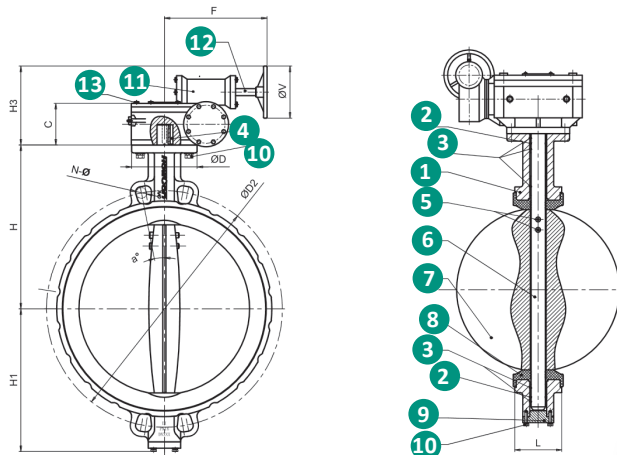
DN 65-350



DN 400-450



DN 500-600



## Product Specification

N°	Name	Material
1	Body	Ductile Iron GGG40
2	O-Ring	NBR
3	Bushing	Brass
4	Seat	Vulcanized EPDM
5	Pin	Stainless Steel 316
6	Disc	Stainless Steel CF8M
7	Stem	Stainless Steel 431
8	Gearbox	Ductile Iron GGG40
9	Bolt	Stainless Steel 316
10	Input Shaft	Stainless Steel 304
11	Bolt	Stainless Steel 304

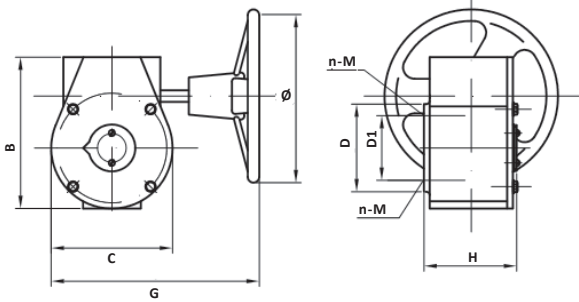
N°	Name	Material
1	Body	Ductile Iron GGG40
2	Bushing	Brass
3	O-Ring	NBR
4	Pin	Stainless Steel 316
5	Stem	Stainless Steel 431
6	Disc	Stainless Steel CF8M
7	Seat	Vulcanized EPDM
8	Cover	Ductile Iron GGG40
9	Bolts and accessories	Stainless Steel 316
10	Bolt	Stainless Steel 316
11	Input Shaft	Stainless Steel 304
12	Bolts	Stainless Steel 304

N°	Name	Material
1	Body	Ductile Iron GGG40
2	O-Ring	NBR
3	Bushing	Brass
4	Key	Carbon Steel
5	Pin	Stainless Steel 316
6	Stem	Stainless Steel 431
7	Disc	Stainless Steel CF8M
8	Seat	Vulcanized EPDM
9	Cover	Ductile Iron GGG40
10	Bolts and accessories	Stainless Steel 316
11	Gearbox	Ductile Iron GGG40
12	Input Shaft	Stainless Steel 304
13	Bolts	Stainless Steel 304

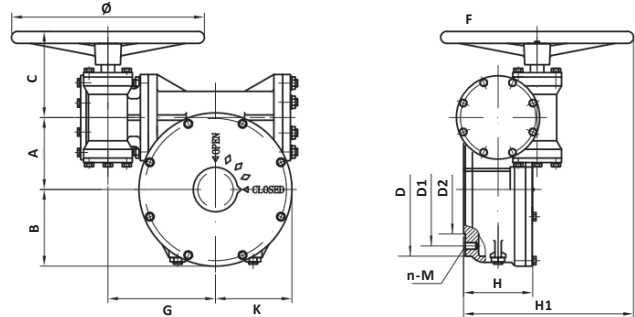
# FIVC Butterfly Valve

Ductile Iron – PN 16 – Wafer – Gearbox – Vulcanized – w/Pin – EN 1092-2

DN 65-450



DN 500-600



## Gearbox Dimensions

Valve size	A	B	C	D	D1	D2	H	H1	G	K	Ø	n-M
65-150	-	125	102	90	70	-	65	-	203	-	135	-
200-250	-	167	141	125	102	-	79	-	295	-	285	-
300-350	-	188	152	175	140	-	80	-	291	-	285	-
400-450	-	279	247	210	165	-	109	-	336	-	390	-
500	100	107	156	210	165	130	125	271	168	107	285	4-M20
600	125	131	160	210	165	130	136	330	193	131	385	4-M20

Dimensions are in millimeters